

# Nashville

## Class 200' Liftboat



# Helix's 200' Nashville liftboat is suitable for working both in shallow, coastal waters and in depths of up to 160 feet.

Our modern liftboats are equipped with cranes capable of delivering cost-effective solutions for platform decommissioning and removal of smaller structures.



## TECHNICAL SPECIFICATIONS

### Main characteristics

Vessel Name	Nashville
Class	ABS load line only
Flag/Port of Registry	New Orleans
Solas	N/A
USCG	Yes
Official Number	1244722
IMO	9688582
Call Sign	WDG9298
Vessel Delivery Date	November 2013
Builder	Conrad
Zero Discharge Capable	Yes
Zero Discharge Ready	Yes

### Leg

Number of Legs	3
Leg Length	200 ft (60.9 m)
Leg Diameter	66 in (1.6 m)
Leg Wall	.75 in - 1.5 in (3.8 cm)

### Dimensions

Length Overall	115 ft
Length (Barge only)	111 ft 3 in
Beam	74 ft
Beam (Barge Only)	66 ft 6 in
Hull Depth	10 ft
Design Draft	8.5 ft
Gross Tonnage	200 US GT
Net Tonnage	132
Max. Deck Cargo	800,000 lbs

### Deck

Total Deck Area	4,500
Usable Deck Area	4,000
Maximum Deckload	800,000 lbs

### Generators

Generator Engine Make	CAT
Generator Engine Model	C-9 Marine
Generator Output	2x 203 kw
Aux Genset Equipped	Yes

### Capacities

Diesel Fuel	9,730 usg (36.8 m <sup>3</sup> )
Potable Water	15,195 usg (57.5m <sup>3</sup> )
Watermaker Equipped	No

### Electronic aids & communications

Compass	Fully Equipped
GPS/DGPS	Fully Equipped
Radar(S)	Fully Equipped
Fathometer	Fully Equipped
Loudhailer	Fully Equipped
Satellite Phone	Fully Equipped
Private Freq Radiotelephone	Fully Equipped
VHF Radio	Fully Equipped
Single Sideband Radio	Fully Equipped
GMDSS	No

### Personnel accommodations

Total Accommodations	43
Vip Accommodations	2 bunks
Crew Accommodations	7
Contractor Accommodations	34
Galley & Dining	Fully Equipped
TV Lounge	Fully Equipped
Laundry Facility	Fully Equipped
Air Condition / Heater	Standard Electrical Commercial Units
Heliport	No

### Performance

Estimated Speed	6 knots
Max Separation, Pad To Deck	180 ft
Max Working Water Depth	160 ft
Max Jacking Soft Bottom	5 ft
Sea States Hard Bottom	4 ft

### Propulsion

Main - Make	2x Caterpillar
Main - Model	M18 Teir 2
Horsepower	1,200
Reduction Gears	MG-516, 5.05: 1

### Pad

Pad Length	32 ft
Pad Width	16 ft
Pad Depth	2 ft 6 in
Pad Loading	N/A
Deck Loading	N/A

### Crane (Port)

Make	Techcrane
Model	L-200-100
Load Ratings	125 tons
Boom Type	Lattice
Boom Length	100 ft
Crane Inst. Type	Pedestal
Heel Pin Height	13 ft 9 in

### Crane (Starboard)

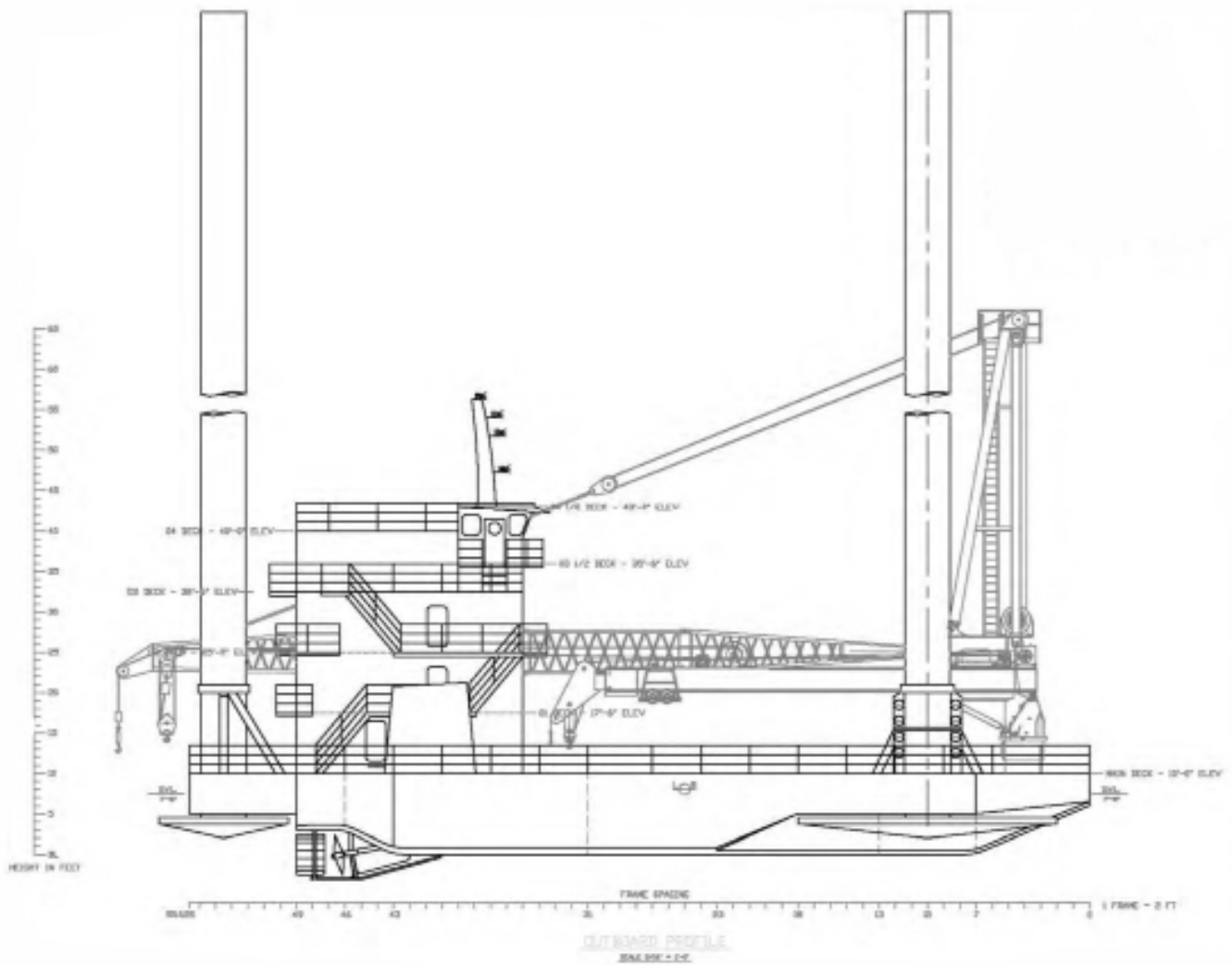
Make	Techcrane
Model	F-60-70
Load Ratings	30 tons
Boom Type	Box
Boom Length	70 ft
Crane Inst. Type	Pedestal
Heel Pin Height	16 ft

# TECHNICAL SPECIFICATIONS

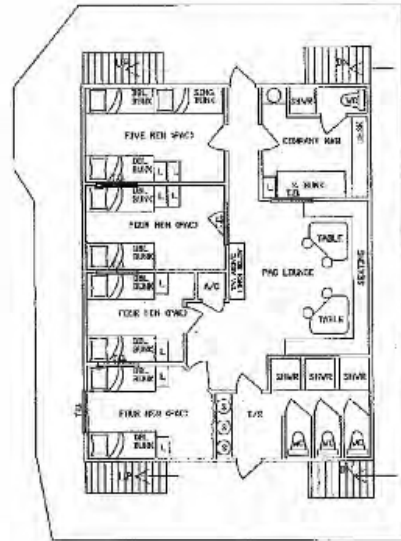
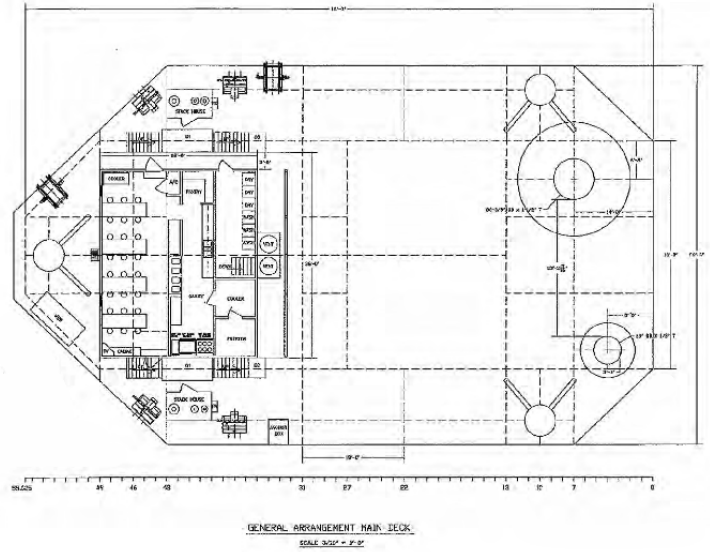
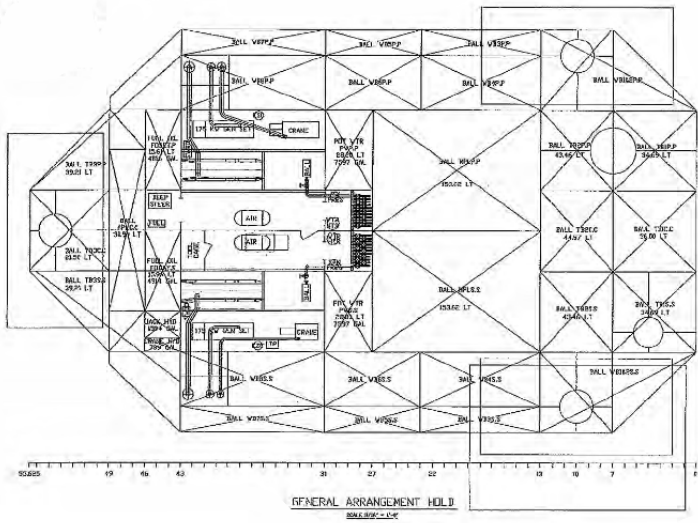
Techcrane L-200-100					
8 PART - MAIN LOAD LINE					
		LOAD LINE LBS		FAST LINE LBS	
Radius in feet	Boom Angle	On Board	Off Board	On Board	Off Board
20	82	250,000	192,000	-	3,300
25	79	250,000	186,000	10,000	3,300
30	76	235,000	155,500	10,000	3,300
35	73	200,000	136,166	10,000	3,300
40	70	173,400	114,433	10,000	3,300
45	67	152,700	100,633	10,000	3,300
50	64	136,200	89,633	10,000	3,300
55	60	122,600	80,566	10,000	3,300
60	57	111,390	73,093	10,000	3,300
65	54	101,855	66,736	10,000	3,300
70	50	93,676	61,284	10,000	3,300
75	46	86,586	56,557	10,000	3,300
80	42	80,383	52,422	10,000	3,300
85	37	74,910	48,773	10,000	3,300
90	32	70,045	45,530	10,000	3,300
95	26	65,692	42,628	10,000	3,300
100	0	61,774	40,016	10,000	3,300
108	0	-	-	10,000	3,300

Techcrane F-60-70			
70 ft Boom			
LOAD LINE LBS			
Radius in feet	Boom Angle	Static (lbs)	Dynamic (lbs)
10	81.8	70,000	57,559
15	77.6	59,557	39,706
20	73.4	48,119	30,747
25	69.1	38,021	25,348
30	64.6	32,597	21,732
35	60.0	28,764	19,136
40	55.2	25,764	17,177
45	50.0	23,463	16,643
50	44.4	21,604	15,643
55	38.2	20,056	14,403
60	31.0	18,717	13,371
65	21.8	17,178	11,453
70	0.0	15,207	10,138

API Maximum Overtuning Moment (ft-lbs) 2,646,004

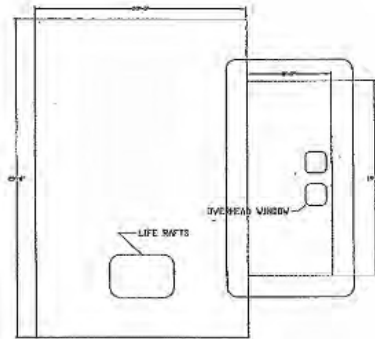
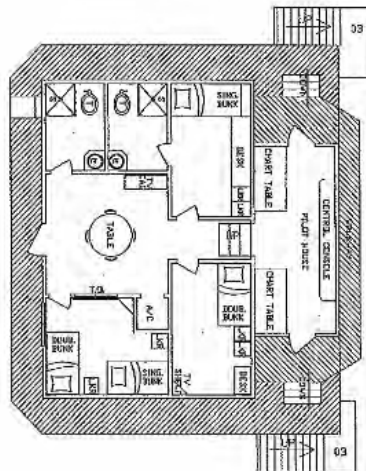


L/B NASHVILLE LAYOUT



GENERAL ARRANGEMENT 01 LEVEL  
SCALE 1/4" = 1'-0"

GENERAL ARRANGEMENT 02 LEVEL  
SCALE 1/4" = 1'-0"



GENERAL ARRANGEMENT 03 LEVEL  
SCALE 1/4" = 1'-0"

GENERAL ARRANGEMENT 04 LEVEL  
SCALE 1/4" = 1'-0"



**Corporate Headquarters**

3505 W. Sam Houston  
Parkway North  
Suite 400  
Houston, Texas  
77043 USA

**T** (281) 618 0400

**Helix Alliance Decom, LLC**

1264 Valhi Blvd  
Houma, Louisiana  
70360 USA

**T** (985) 851 8801